



REPACOR™ SW-1000

REPAIR COATING / PUTTY WITH 100% VOLUME SOLIDS

Revised 03/2024 Issue 4

PRODUCT DESCRIPTION

An abrasion resistant, innovative 2-pack coating / putty for maintenance or repair of (mechanically) damaged coating areas. Mechanically- and UV-resistant protective coating in easy-to-use-cartridge.

- Solvent-free, 100% solids, CMR-free
- Easy-to-use packaging for difficult repair jobs
- Single layer coating
- Early water resistance and under water cure
- Surface tolerant - can be used on many substrates as manually prepared steel, stainless steel, galvanization or aluminium, even on foreign coatings (except siloxane based coatings)
- Corrosion protection at 500 µm, similar to original in shop coating
- Diffusion resistant
- Plate like glass flakes increase coating strength
- Impact and abrasion resistant
- Very high colour retention
- If required overcoatable with 2-pack PU topcoats

RECOMMENDED USE

Can be used as a corrosion protection putty for On and Offshore (wind turbines), for hydraulic engineering (lock gates, steel sheet piles etc.) or other elevated steel structures if a simple, high performance and durable repair coating is required.

PRODUCT TECHNICAL DATA

Volume Solids:	100 ± 2% (ISO 3233-3)
Weight Solids:	100 ± 2%
VOC:	0 g/l determined practically in accordance with Protective Coatings Directive of German Paint Industry Association (VdL-RL 04). 0 g/l calculated from formulation to satisfy EC Solvent Emissions Directive. 0 g/kg calculated from formulation to satisfy EC Solvent Emissions Directive (UK).
Colours:	RAL 1023 (colour shade approved according to WSA-TR05), RAL 7035. Slight colour deviations are possible due to raw material characteristics.
Flash Point:	Base: > 200°C, Hardener: > 200°C.
Cleaner/Thinner:	Thinner P (for cleaning). Thoroughly clean tools and equipment immediately after use. Do not thin Repacor™ SW-1000.
Pack Size:	A two component material supplied in a cartridge: Cartridge with 295 g, 12 cartridges per box, 60 boxes on pallet.
Mixing Ratio:	2 parts base to 1 part hardener by volume. Self mixing due to 2-part cartridges with static mixer.
Density:	1.5 kg/l (may vary with colours).
Shelf Life:	2 years from date of manufacture, stored in originally sealed cartridges in a cool and dry environment.

Recommended Application Methods:

Putty, Brush

Typical Thickness:

	Recommended Spreading Rate Per Coat	
	Typical	
Dry	500 µm	1000 µm
Wet	500 µm	1000 µm
Theoretical Consumption*	0.750 kg/m ² 0.500 l/m ²	1.500 kg/m ² 1.000 l/m ²
Theoretical Coverage*	1.33 m ² /kg 2.00 m ² /l	0.67 m ² /kg 1.00 m ² /l

* This figure makes no allowance for surface profile, uneven application, overspray or losses in containers and equipment.

Film thickness will vary depending on actual use and specification.

Pot Life:

+ 20°C | 20 min

If cartridge is closed properly usable for approx. 30 days.

Pot life is dependent on temperature and volume.



REPACOR™ SW-1000

REPAIR COATING / PUTTY WITH 100% VOLUME SOLIDS

Revised 03/2024 Issue 4

AVERAGE DRYING TIMES

For 500 µm Dry Film Thickness:

	+ 20°C
Dry to handle (Drying Stage 6*)	1 hours
To Recoat	6 hours

*ISO 9117

Final cure: 1 week at + 20°C, depending on film thickness and temperature. Material also cures under water.

These figures are given as a guide only. Factors such as air movement, film thickness and humidity must also be considered.

APPROVALS & ENDORSEMENTS

Tested according to ISO 20340, certified by Fraunhofer-Institut für Fertigungstechnologie und Angewandte Materialforschung (IFAM), Bremen.

SURFACE PREPARATION

Ensure surfaces to be coated are clean, dry and free from all surface contamination such as oil, grease, dirt and corrosion products to achieve satisfactory adhesion.

Steel substrates shall be prepared by power tool grinded to P Ma – P St3 until a metallic sheen is arising or tensioned wire blast cleaning to P Sa 2½ according to ISO 8501-1 (ISO 12944-4).

Average surface profile Rz ≥ 30 µm.

MIXING

By means of a static mixer, which is screwed on the cartridge prior to the application (see Application Equipment).

APPLICATION CONDITIONS

Substrate temperature shall be above 0°C and at least 3°C above the dew point.

Material temperature shall be above + 10°C.

Relative air humidity shall be below 85%.

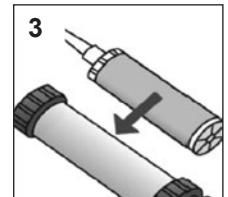
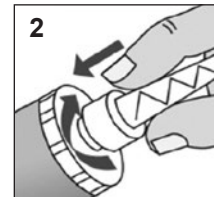
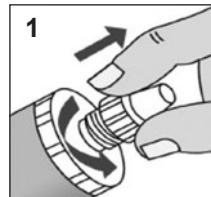
The surface must be dry and free from ice.

APPLICATION EQUIPMENT

Provide cartridge:

1. Unscrew the cartridge, remove cap.
2. Screw on the static mixer.
3. Place the cartridge in the gun.

A standard sealant gun for cartridges with a thrust ratio between 18:1 and 24:1 can be used. When using battery or pneumatic guns the maximum force that can be applied is 3500N.



Pressing on the cartridge shortly until uniform coloured material comes out (approx. 1 cm).

Start application by putty or brush.

When work is interrupted the static mixer can remain on the cartridge after the gun pressure has been relieved. In the static mixer material can remain up to 20 minutes at + 20 °C. If the material hardened in the static mixer, the static mixer must be replaced.



REPACOR™ SW-1000

REPAIR COATING / PUTTY WITH 100% VOLUME SOLIDS

Revised 03/2024 Issue 4

RECOMMENDED SYSTEMS

1 x Repacor™ SW-1000.
In case of deviating colour shades it can be overcoated with common 2-pack PUR topcoats as for example Acrolon® EG-5, Acrolon® 2230 VHS or Acrolon® 2330. For external cathodic protection systems a minimum dry film thickness of 1000 µm is necessary.

ADDITIONAL NOTES

Drying times, curing times and pot life should be considered as a guide only.

Chemical resistance:

Resistant to industrial and marine environments, fresh-, brackish- and salt water, neutral salts, mineral oil and heating oil, grease and oils, detergents etc.

Temperature resistance:

Dry heat up to approx. + 100°C.
Increased humid ambient temperature and warm water up to approx. + 40°C.

For significant differential of temperature gradient please contact Sherwin-Williams.

Numerical values quoted for physical data may vary slightly from batch to batch.

HEALTH & SAFETY

Consult Product Health and Safety Data Sheet for information on safe storage, handling and application of this product.

WARRANTY

Whilst all statements made about our products (whether in this data sheet or otherwise) are correct and accurate to the best of our knowledge, we have no control over the quality or the condition of the substrate, the application conditions or the many other factors affecting your use and application of our product.

The appropriateness of the product under the actual conditions of application or intended use must be determined exclusively by you. The content of this document, and of any oral or written statements already made or to be made in relation to the subject matter of this document, including any suggestions as to appropriate products and any proposed application methods, technical details and other product information represent only test results or experience obtained under controlled or defined circumstances, and is therefore provided for general information purposes only.

Unless we agree specifically in writing to do so, we will not be liable to you for any loss or damage whether in contract, tort (including negligence), breach of statutory duty, misrepresentation, misstatement or otherwise, arising under or in connection with this document or such statements.

We disclaim any express or implied representations, warranties or guarantees (including any implied warranty of merchantability or fitness for a particular purpose), though nothing in this disclaimer excludes or limits our liability for death or personal injury arising from our negligence, or our fraud or fraudulent misrepresentation, or any other liability that cannot be excluded or limited by law.

All products supplied and technical advice given are subject to our Standard Terms and Conditions of Sale which you should request a copy of and review carefully.

This document may be modified and updated from time to time, and is uncontrolled once printed. It is the users responsibility to ensure they are using the most up to date version – this can be found at: www.sherwin-williams.com/protectiveEMEA.

If this datasheet has been translated, then it has been done using the English version as the source. In case of any queries, please refer to the master English version which can be found at: www.sherwin-williams.com/protectiveEMEA.